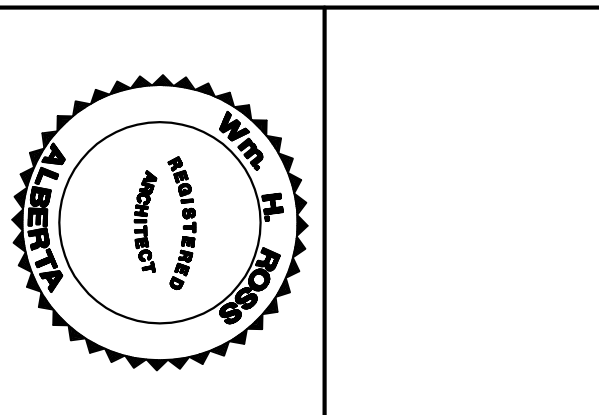


This drawing is the property of William H. Ross Architects and shall not be reproduced or used in any way without permission. MUST NOT be scaled. Any discrepancies are to be spotted to the architect for adjustment prior to construction.



no	date	revision	by
05	May 05/06	Issued for discussion	CR
04	Sept. 11/07	Issued for DP CR	CR
03	Aug 30/07	Final notations	CR
02	July 16/07	Issued for Discussion	CR
01	June 11/07	Issued for Discussion	CR

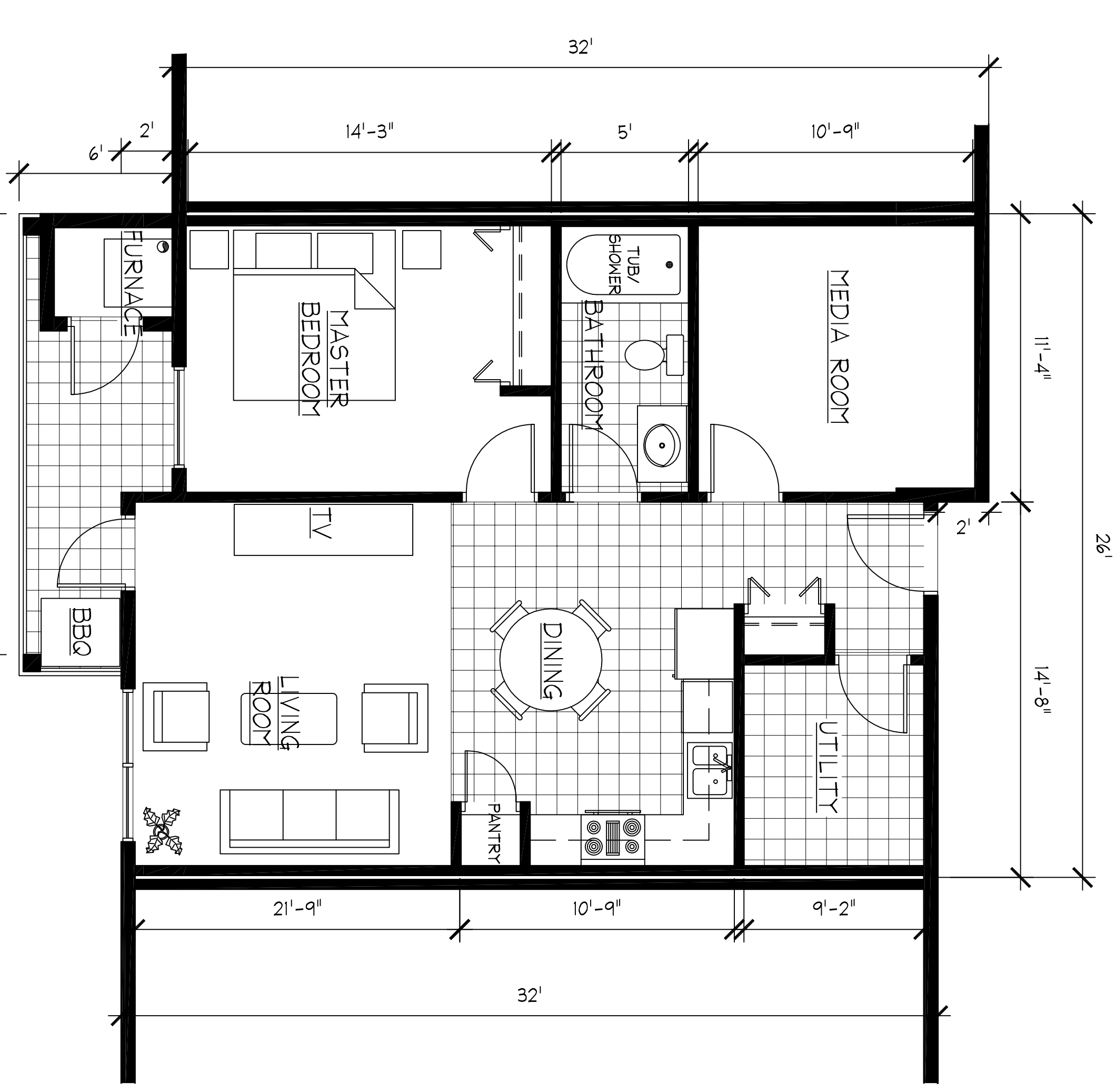
email: whra@shaw.ca
 phone: (780) 482-3495
 fax: (780) 488-0725

proposed MULTIFUNCTION FACILITY GIBBONS, EDMONTON, AB

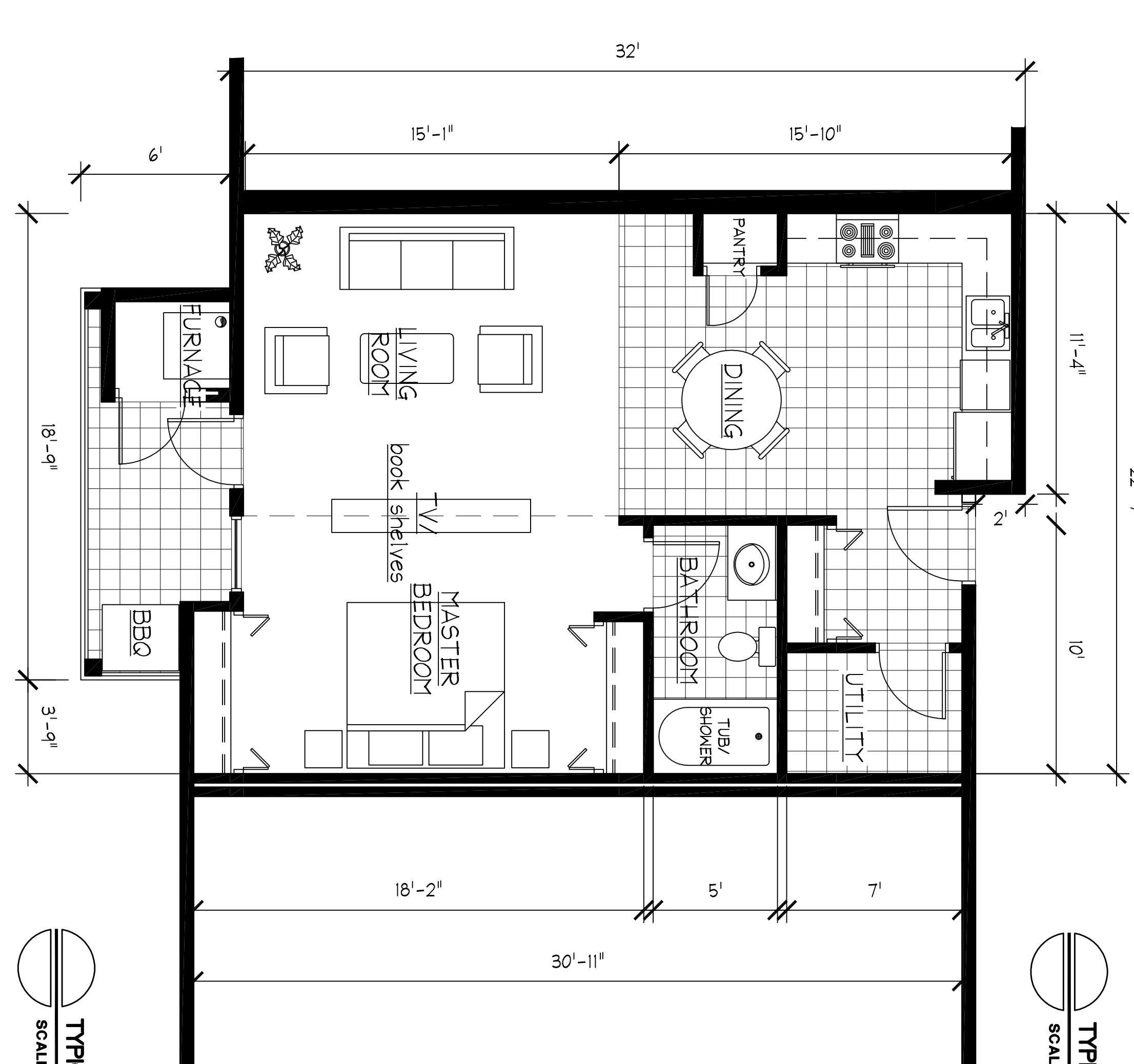
Prepared for: P. RUSSELL/ D. JUBINVILLE

WILLIAM ROSS ARCHITECTS

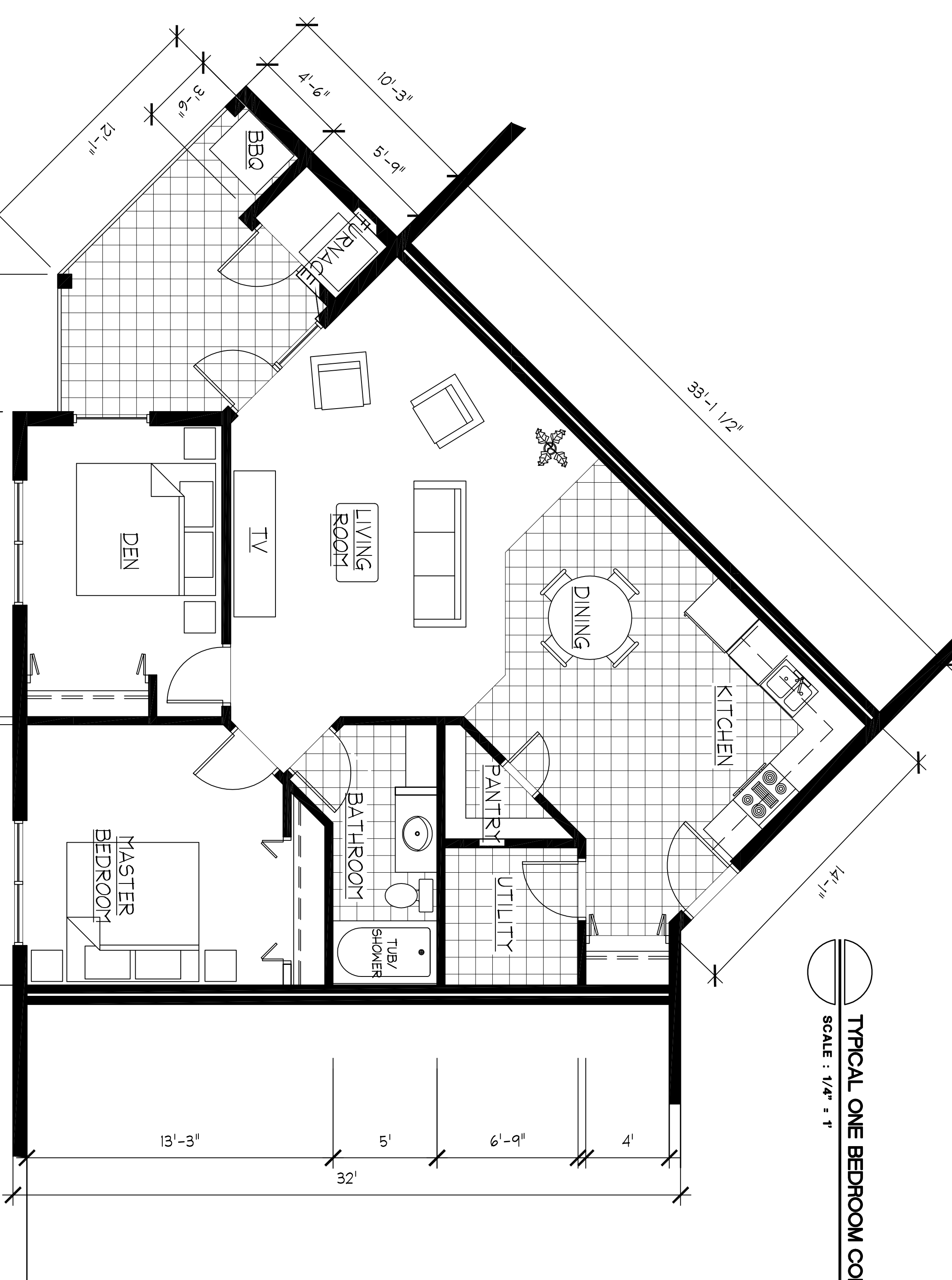
APARTMENT LAYOUTS
 dwn: Corrie
 date: July 26, 2007
 scale: AS NOTED
 job #: 0710
 sheet: A-06
 of 7



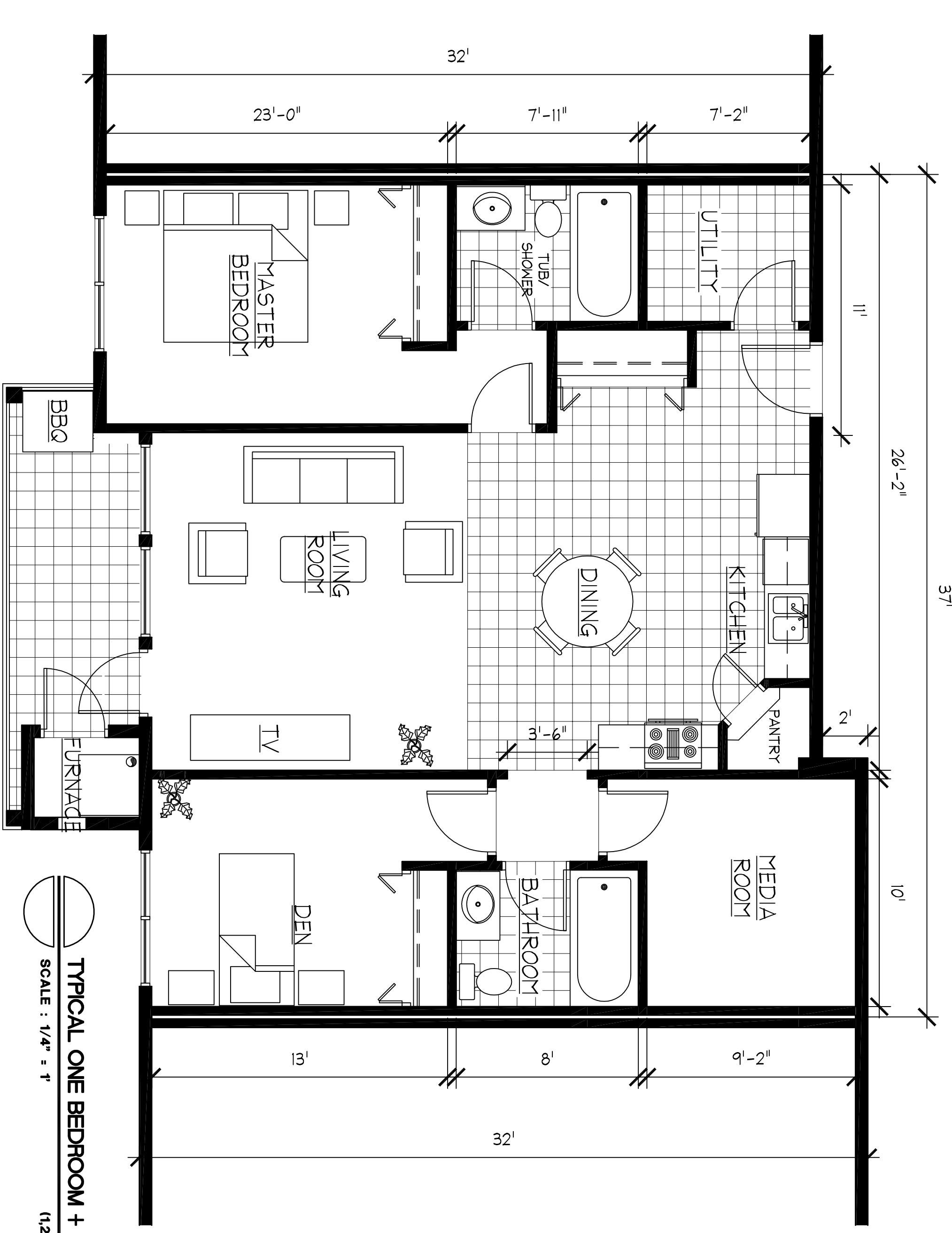
TYPICAL ONE BEDROOM APARTMENT 'A'
 SCALE : 1/4" = 1'
 (923.88 SQ. FT)



TYPICAL STUDIO
 SCALE : 1/4" = 1'
 (825.00 SQ. FT)



TYPICAL ONE BEDROOM CORNER APARTMENT 'C'
 SCALE : 1/4" = 1'
 (1,977.78 SQ. FT)



TYPICAL ONE BEDROOM + DEN APARTMENT 'B'
 SCALE : 1/4" = 1'
 (1,286.62 SQ. FT)